

X5C2R-004

Combination Air Engaged Friction Clutch, Spring Engaged Friction Brake, Stop & Start the Shaft Input / Output IEC Frame 112 B5 Flange Mount



Suitable for pulley output

Clutch Engagement/Brake Engagement

Air/Spring

Facing Type

High Coefficient

Clutch Torque @ 80 PSI (max) – Dynamic

495 Pound Inches

Brake Torque @ Spring Pressure (fixed)

197 Pound Inches

Brake Release Pressure

20 - 30 PSI

Maximum RPM

1,750

Input Bore/Output Shaft

28mm [1.102 Inches]

Air Volume New

2.03 Cubic Inches

Air Volume Worn

2.86 Cubic Inches

Finish

Aluminum

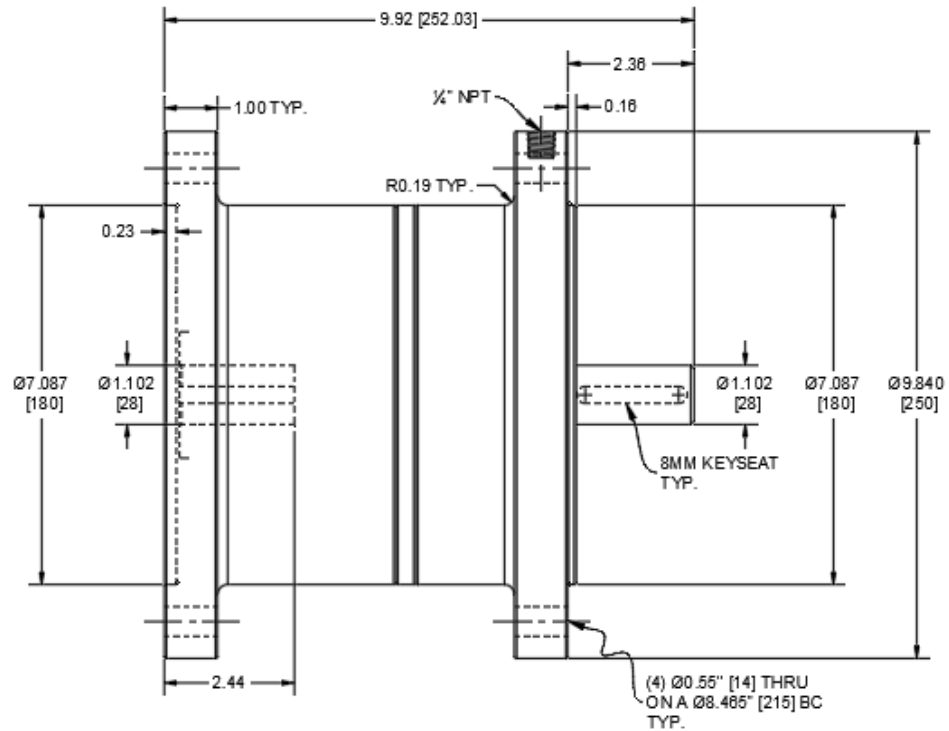
Open or Enclosed Construction

Enclosed

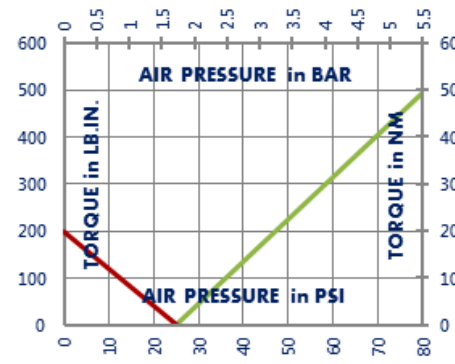
Overhung Load Capacity

93 Pounds

Shipping Weight



TORQUE vs. AIR PRESSURE



NEW vs. BURNISHED TORQUE

The torque output of a new friction brake or clutch can be up to 40% less than the published torque rating. To achieve full design torque, a unit must be cycled under load to burnish the friction surfaces. The exact number of cycles varies by application.

When calculating required torque always use a safety factor of 1.5 to 2. It is not recommended to select a product for use at its maximum rated torque for continuous duty.

PRODUCT SELECTION

Torque capacity is only one factor to consider when making a product selection. Ensure that you will have the right product for the job by contacting our engineering department for application review and selection assistance.



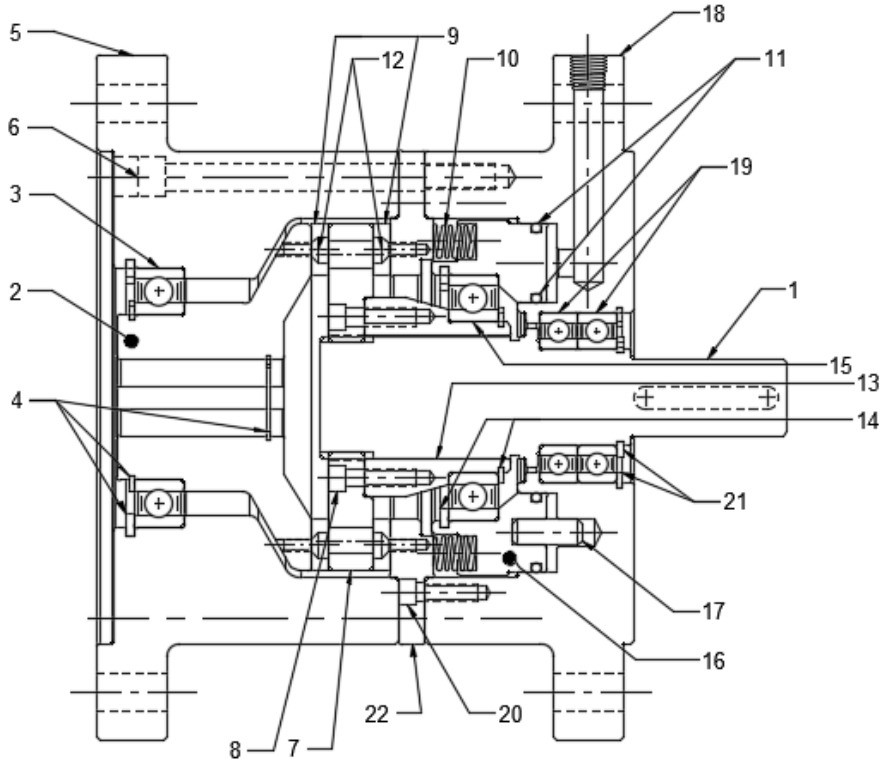
101 Cummings Drive
Walton, KY 41094 USA
859-291-0849
machiii.com

engineering@machiii.com

45 Pounds

X5C2R-004

Parts Diagram



REF#	DESCRIPTION & PARTS INCLUDED	QUANTITY	KIT NUMBER
DRIVE HUB KIT			
1	Drive Hub	1	X5C2R-004-HUBK
ADAPTER KIT			
2	Female Hub	1	X5C2R-004-ADPK
3	Bearing	1	
4	Retainer Ring	3	
5	Adapter Female	1	
6	Screw	6	
DRIVE DISC KIT			
7	Drive Disc	1	X5C2R-56H-DRDK
8	Screw	6	
REPAIR KIT			
9	Friction Disc	2	X5C2R-004-RPRK
10	Spring	24	
11	O-Ring	2	
12	Screw	12	
PISTON KIT			
13	Cone	1	X5C2R-56H-PSTK
14	Retainer Ring	2	
15	Bearing	1	
16	Piston	1	
17	Pin	2	
CYLINDER KIT			
18	Adapter Male	1	X5C2R-004-CYLK
19	Bearing	2	
20	Screw	6	
21	Retainer Ring	2	
22	Brake Adapter	1	

PARTS KITS

The *Repair Kit* contains common wear items for this product. Users are encouraged to stock one or more repair kits considering the number of units installed and the potential downtime if machinery on which the unit is installed is critical equipment. To obtain current pricing and lead time for parts kits, contact customer service.

orders@machiii.com

ADDITIONAL PRODUCT INFORMATION

For illustrated guides showing how Mach III products work, selection guidelines, product manuals, and installation and use recommendations:

<https://machiii.com/resources/how-our-products-work>

For information about how to order, return policy and warranty information:

<https://machiii.com/resources/how-to-order>



859-291-0849

machiii.com

engineering@machiii.com