

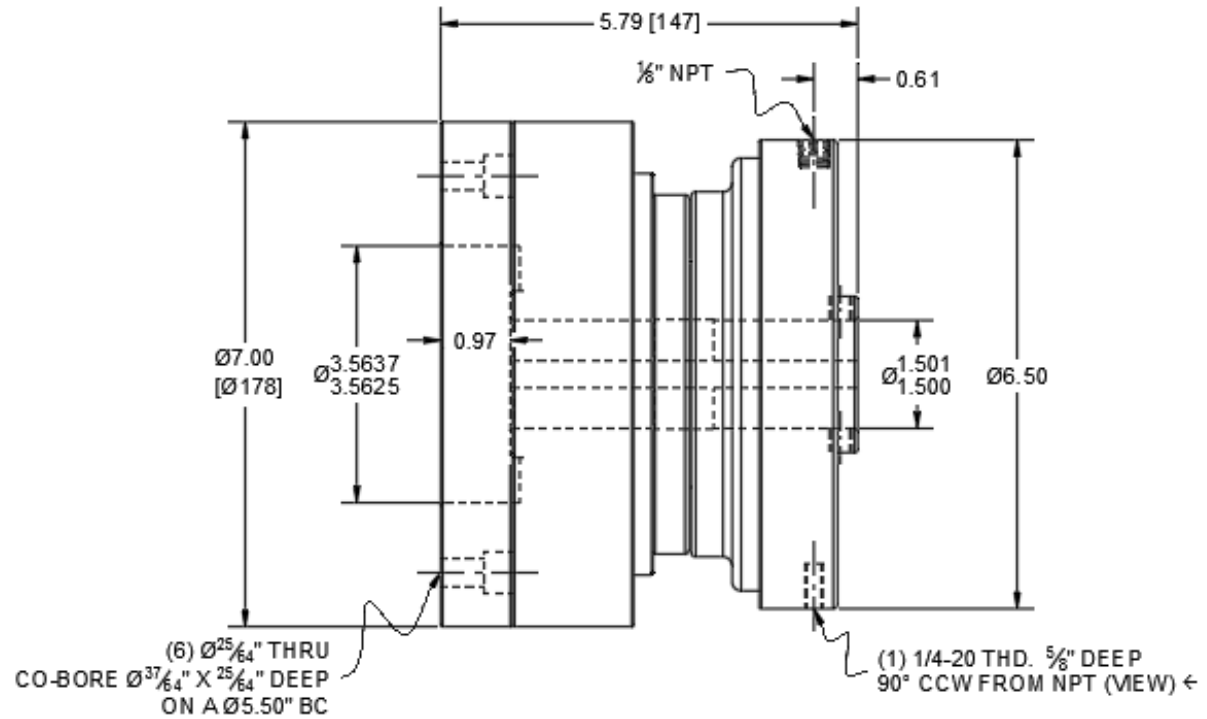
M5R2K-001

Air Engaged Friction Clutch Mechanism with Adapter

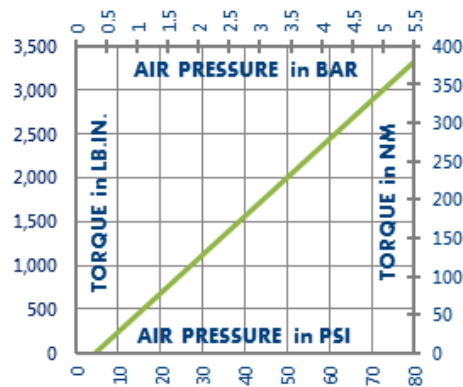


Important: Both shaft and connected component must be bearing supported.

Engagement/Disengagement	Air/Spring
Facing Type	High Coefficient
Torque @ 80 PSI – Dynamic	3,320 Pound Inches
Minimum Engagement Pressure	5 PSI
Maximum Operating Pressure	80 PSI
Maximum RPM	1,750
Bore Range with Standard Keyway	1.188 (30) to 1.563 (40) Inches (mm)
Air Volume New	0.99 Cubic Inches
Air Volume Worn	4.78 Cubic Inches
Finish	Aluminum
Open or Enclosed Construction	Open
Component Mounting Bolt Circle	4.500 Inches
Shipping Weight	25 Pounds



TORQUE vs. AIR PRESSURE



NEW vs. BURNISHED TORQUE

The torque output of a new friction brake or clutch can be up to 40% less than the published torque rating. To achieve full design torque, a unit must be cycled under load to burnish the friction surfaces. The exact number of cycles varies by application.

When calculating required torque always use a safety factor of 1.5 to 2. It is not recommended to select a product for use at its maximum rated torque for continuous duty.

PRODUCT SELECTION

Torque capacity is only one factor to consider when making a product selection. Ensure that you will have the right product for the job by contacting our engineering department for application review and selection assistance.

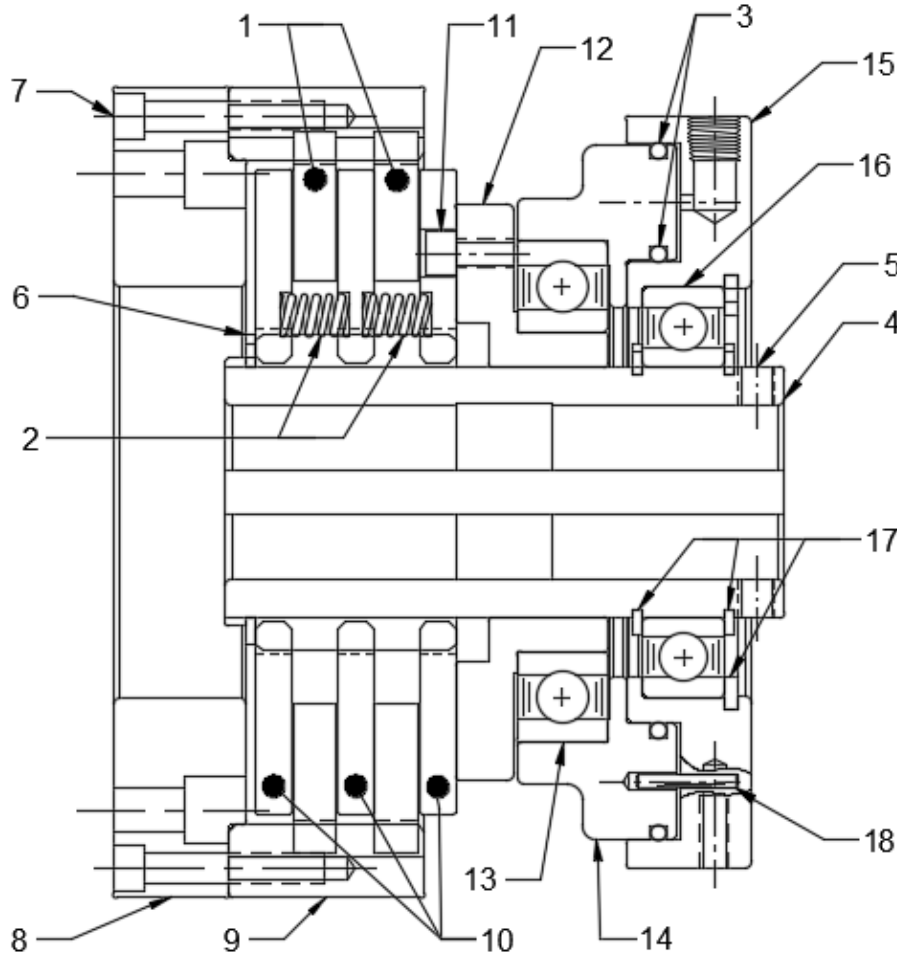


101 Cummings Drive
Walton, KY 41094 USA
859-291-0849
machiii.com

engineering@machiii.com

M5R2K-001

Parts Diagram



REF#	DESCRIPTION & PARTS INCLUDED	QUANTITY	KIT NUMBER
	REPAIR KIT		M5R2K-001-RPRK
1	Friction Disc	2	
2	Coil Spring	6	
3	"O" Ring	2	
	DRIVE HUB KIT		M5R2K-001-DRDK
4	Drive Hub	1	
5	Set Screw	2	
6	Retainer Ring	1	
	ADAPTER KIT		M5R2K-001-ADPK
7	Screw	6	
8	Adapter	1	
9	Ring Gear	1	
	DRIVE DISC KIT		C5A2K-STH-DRDK
10	Drive Disc	3	
	PISTON KIT		C5A2K-STH-PSTK
11	Screw	1	
12	Cone	1	
13	Bearing	1	
14	Piston	1	
	CYLINDER KIT		C5A2K-STH-CYLK
15	Cylinder	1	
16	Bearing	1	
17	Retainer Ring	3	
18	Pin	2	

PARTS KITS

The *Repair Kit* contains common wear items for this product. Users are encouraged to stock one or more repair kits considering the number of units installed and the potential downtime if machinery on which the unit is installed is critical equipment. To obtain current pricing and lead time for parts kits, contact customer service.

orders@machiii.com

ADDITIONAL PRODUCT INFORMATION

For illustrated guides showing how Mach III products work, selection guidelines, product manuals, and installation and use recommendations:

<https://machiii.com/resources/how-our-products-work>

For information about how to order, return policy and warranty information:

<https://machiii.com/resources/how-to-order>



859-291-0849

machiii.com

engineering@machiii.com