

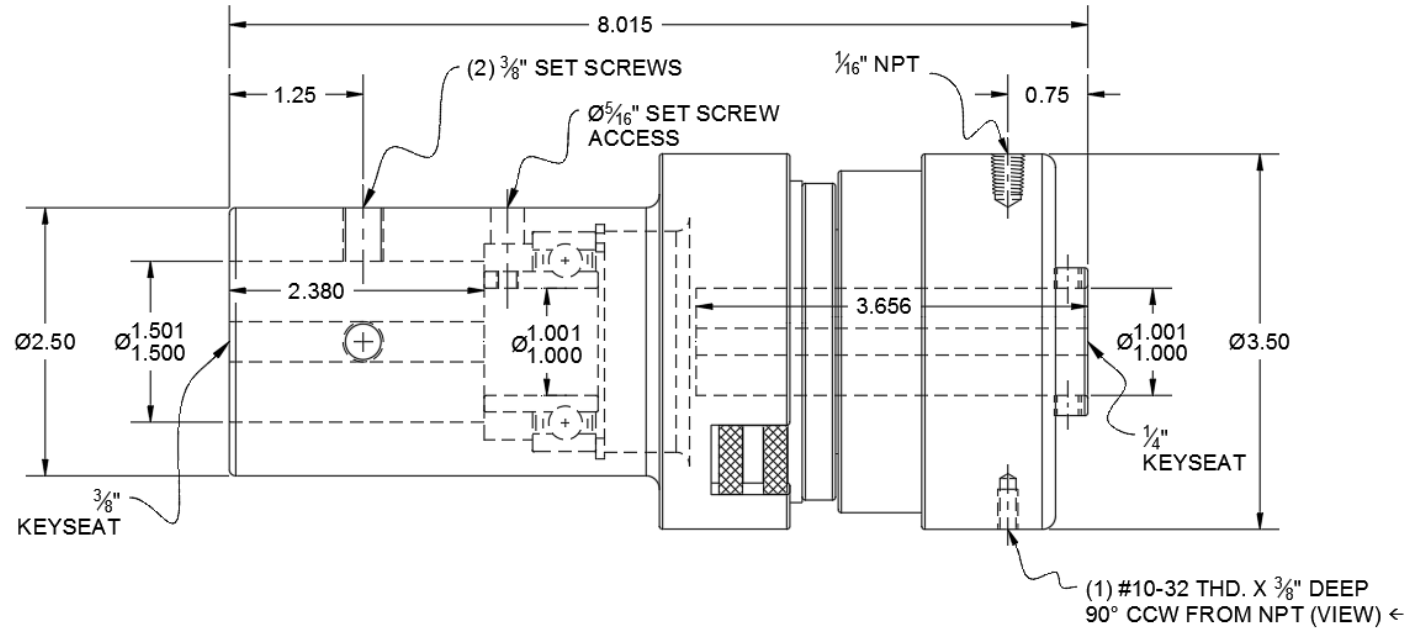
M3G2R-002

Conway 858-3M Clutch Replacement with Coupling

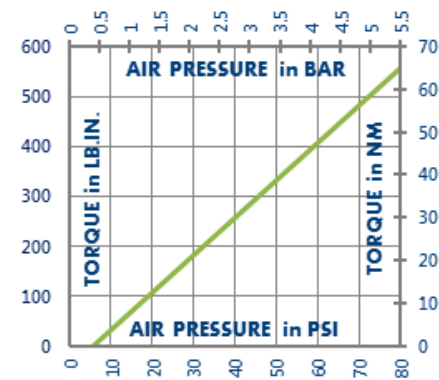


Mechanism DOES NOT support Coupling

Engagement/Disengagement
Air/Spring
Facing Type
High Coefficient
Torque @ 80 PSI – Dynamic
555 Pound Inches
Minimum Engagement Pressure
6 PSI
Maximum Operating Pressure
80 PSI
Maximum RPM
1,750
Bores with Standard Keyways
1.500 / 1.000
Air Volume New
0.20 Cubic Inches
Air Volume Worn
1.30 Cubic Inches
Finish
Aluminum
Open or Enclosed Construction
Open
Shipping Weight
8 Pounds



TORQUE vs. AIR PRESSURE



NEW vs. BURNISHED TORQUE

The torque output of a new friction brake or clutch can be up to 40% less than the published torque rating. To achieve full design torque, a unit must be cycled under load to burnish the friction surfaces. The exact number of cycles varies by application.

When calculating required torque always use a safety factor of 1.5 to 2. It is not recommended to select a product for use at its maximum rated torque for continuous duty.

PRODUCT SELECTION

Torque capacity is only one factor to consider when making a product selection. Ensure that you will have the right product for the job by contacting our engineering department for application review and selection assistance.



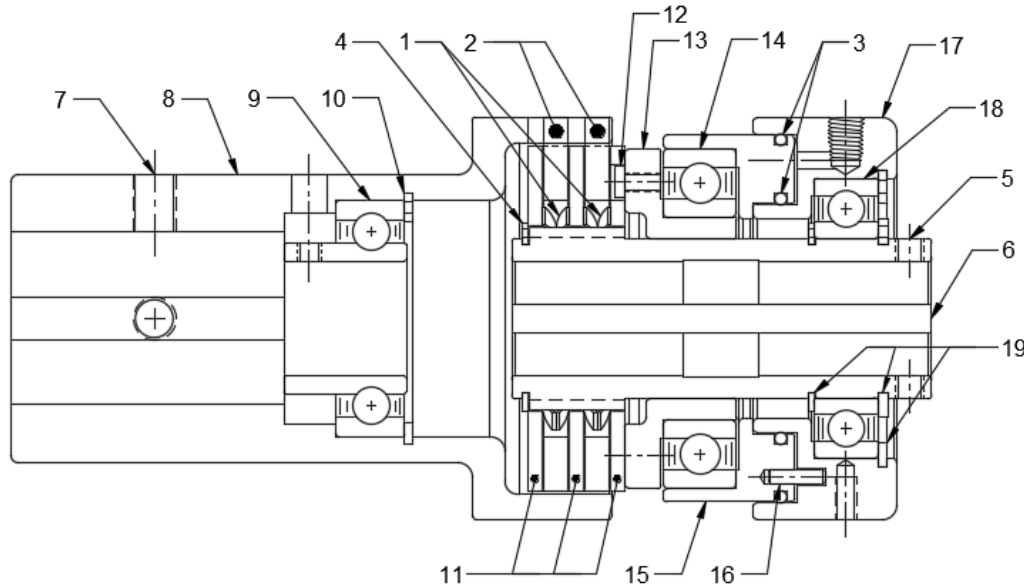
859-291-0849

machiii.com

engineering@machiii.com

M3G2R-002

Parts Diagram



REF#	DESCRIPTION & PARTS INCLUDED	QUANTITY	KIT NUMBER
	REPAIR KIT		M3G2R-002-RPRK
1	Wave Spring	2	
2	Friction Disc	2	
3	O-Ring	2	
	DRIVE HUB KIT		M3G2R-002-HUBK
4	Retainer Ring	1	
5	Set Screw	2	
6	Drive Hub	1	
	COUPLING KIT		M3G2R-002-CPLK
7	Set Screw	2	
8	Coupling	1	
9	Bearing	1	
10	Retainer Ring	1	
	DRIVE DISC KIT		C3A2R-STH-DRDK
11	Drive Disc	3	
	PISTON KIT		C3A2H-STH-PSTK
12	Screw	1	
13	Cone	1	
14	Bearing	1	
15	Piston	1	
16	Pin	2	
	CYLINDER KIT		C3A2H-STH-CYLK
17	Cylinder	1	
18	Bearing	1	
19	Retainer Ring	3	

PARTS KITS

The *Repair Kit* contains common wear items for this product. Users are encouraged to stock one or more repair kits considering the number of units installed and the potential downtime if machinery on which the unit is installed is critical equipment. To obtain current pricing and lead time for parts kits, contact customer service.

orders@machiii.com

ADDITIONAL PRODUCT INFORMATION

For illustrated guides showing how Mach III products work, selection guidelines, product manuals, and installation and use recommendations:

<https://machiii.com/resources/how-our-products-work>

For information about how to order, return policy and warranty information:

<https://machiii.com/resources/how-to-order>



859-291-0849

machiii.com

engineering@machiii.com