

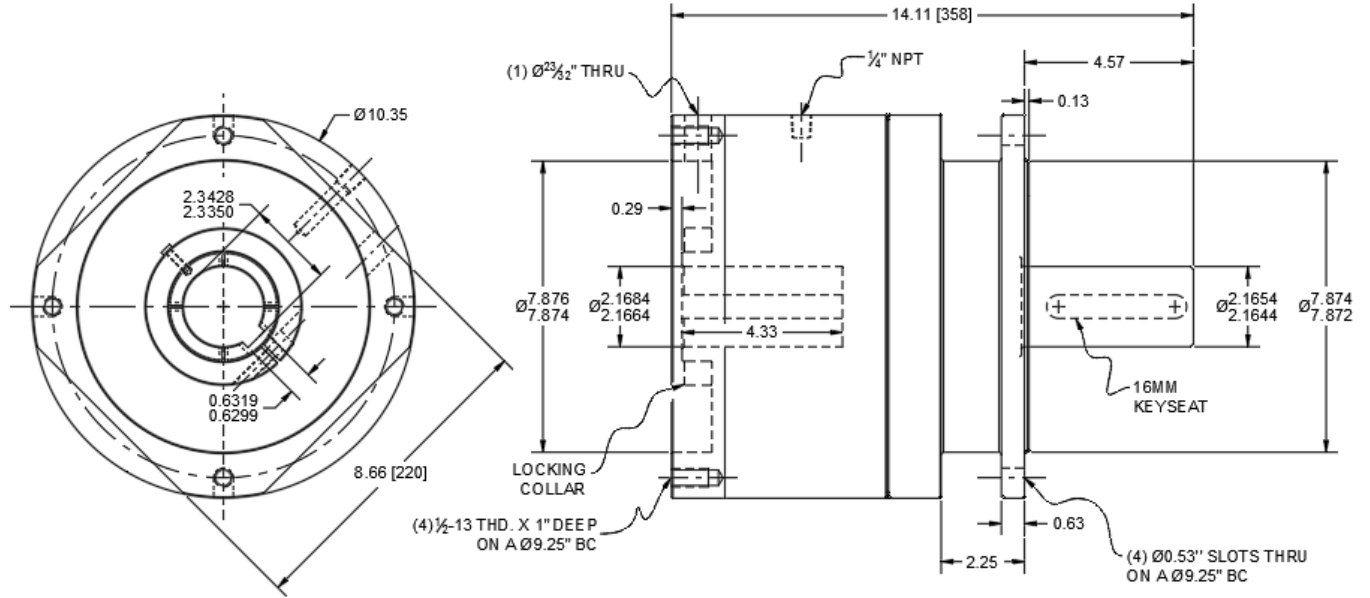
D8C2K-002

Spring Engaged Friction Brake
Custom Servo Motor Mount

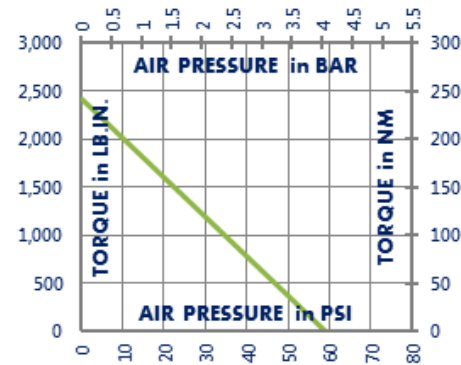


NOT suitable for pulley output

Engagement/Disengagement	Spring/Air
Facing Type	High Coefficient
Torque – Dynamic	2,409 Pound Inches
Minimum Disengagement Pressure	59 PSI
Maximum Operating Pressure	90 PSI
Maximum RPM	1,650
Input Bore/Output Shaft	55mm [2.165 Inches]
Air Volume New	0.71 Cubic Inches
Air Volume Worn	5.93 Cubic Inches
Finish	Aluminum
Open or Enclosed Construction	Enclosed
Shipping Weight	75 Pounds



TORQUE vs. SPRING PRESSURE



NEW vs. BURNISHED TORQUE

The torque output of a new friction brake or clutch can be up to 40% less than the published torque rating. To achieve full design torque, a unit must be cycled under load to burnish the friction surfaces. The exact number of cycles varies by application.

When calculating required torque always use a safety factor of 1.5 to 2. It is not recommended to select a product for use at its maximum rated torque for continuous duty.

PRODUCT SELECTION

Torque capacity is only one factor to consider when making a product selection. Ensure that you will have the right product for the job by contacting our engineering department for application review and selection assistance.



101 Cummings Drive
Walton, KY 41094 USA

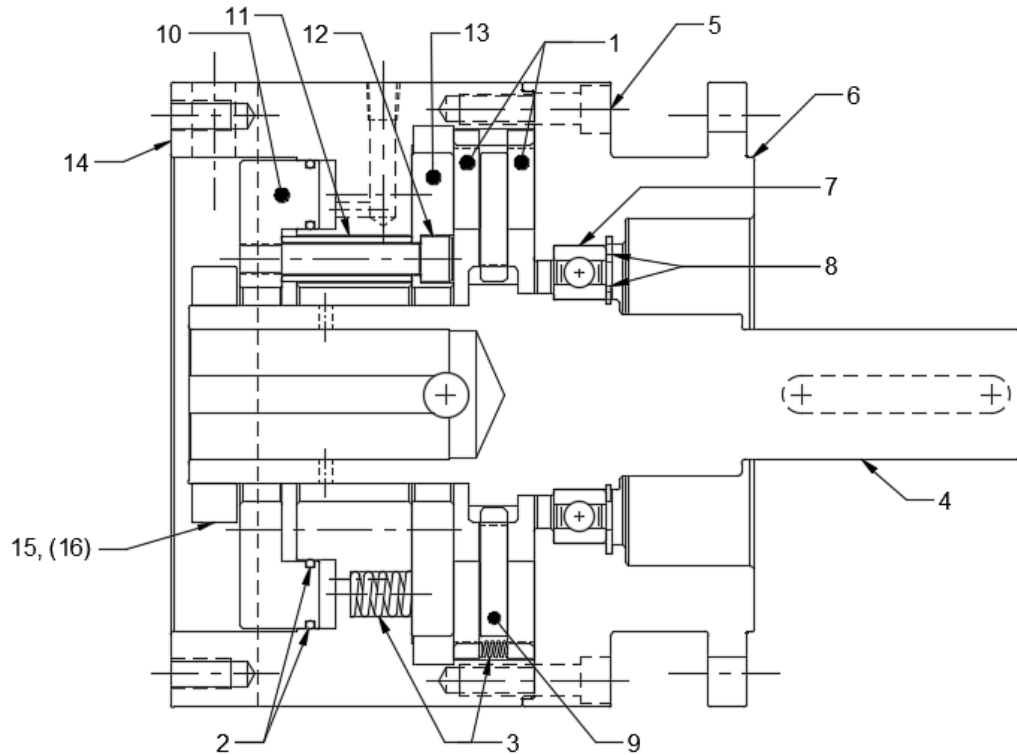
859-291-0849

machiii.com

engineering@machiii.com

D8C2K-002

Parts Diagram



REF#	DESCRIPTION & PARTS INCLUDED	QUANTITY	KIT NUMBER
	REPAIR KIT		D8C2K-002-RPRK
1	Friction Disc	2	
2	O-Ring	2	
3	Coil Spring	11	
4	DRIVE HUB		D8C2K-002-P001
	TOP PLATE KIT		D8C2K-002-TPLK
5	Screw	4	
6	Top Plate	1	
7	Bearing	1	
8	Retainer Ring	2	
9	DRIVE DISC	1	D8C2K-002-P005
	PISTON KIT		D8C2K-002-PSTK
10	Piston	1	
11	Spacer	3	
12	Screw	3	
13	Pressure Plate	1	
14	CYLINDER	1	D8C2K-002-P003
	CLAMP COLLAR KIT		D8C2K-002-CLCK
15	Clamp Collar	1	
16	Screw	1	

PARTS KITS

The *Repair Kit* contains common wear items for this product. Users are encouraged to stock one or more repair kits considering the number of units installed and the potential downtime if machinery on which the unit is installed is critical equipment. To obtain current pricing and lead time for parts kits, contact customer service.

orders@machiii.com

ADDITIONAL PRODUCT INFORMATION

For illustrated guides showing how Mach III products work, selection guidelines, product manuals, and installation and use recommendations:

<https://machiii.com/resources/how-our-products-work>

For information about how to order, return policy and warranty information:

<https://machiii.com/resources/how-to-order>



859-291-0849

machiii.com

engineering@machiii.com