

X7C2R-18H

Combination Air Engaged Friction Clutch, Spring Engaged Friction Brake, Stop & Start the Shaft
NEMA 182TC, 184TC Frame Mount



Suitable for pulley output

Clutch Engagement/Brake Engagement

Air/Spring

Facing Type

High Coefficient

Clutch Torque @ 80 PSI (max) – Dynamic

1,032 Pound Inches

Brake Torque @ Spring Pressure (fixed)

395 Pound Inches

Brake Release Pressure

20 - 30 PSI

Maximum RPM

1,750

Input Bore/Output Shaft

1.125 Inches

Air Volume New

2.95 Cubic Inches

Air Volume Worn

4.17 Cubic Inches

Finish

Aluminum

Open or Enclosed Construction

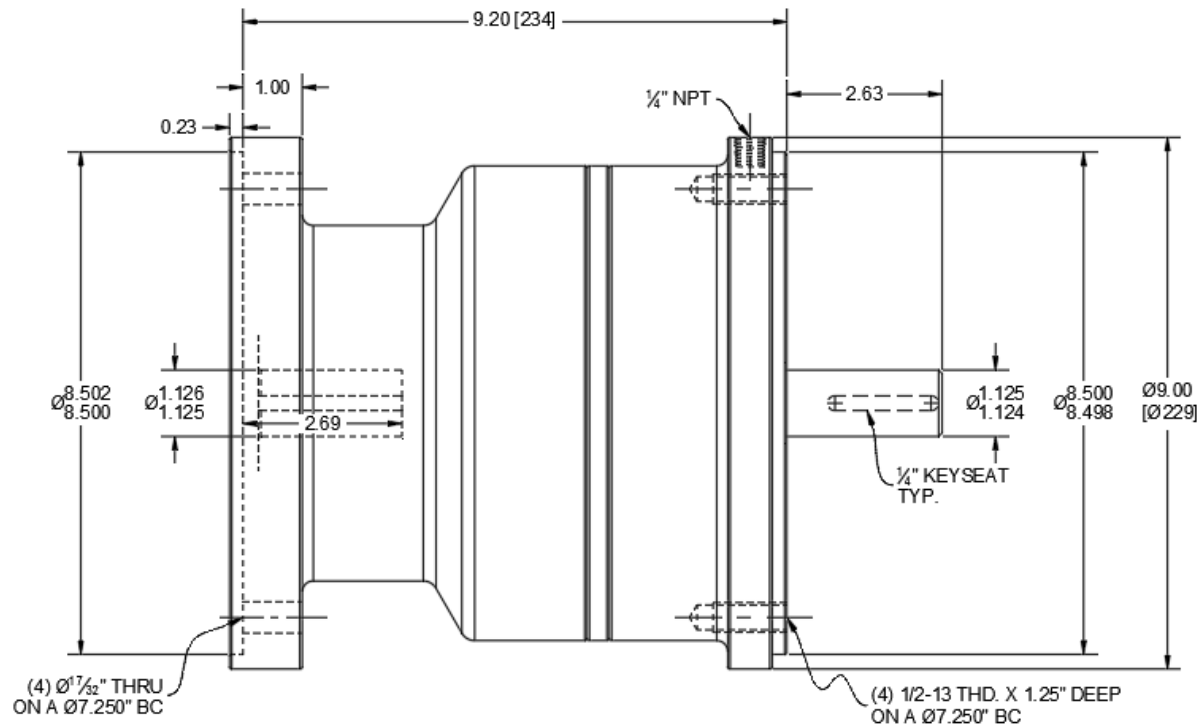
Enclosed

Overhung Load Capacity

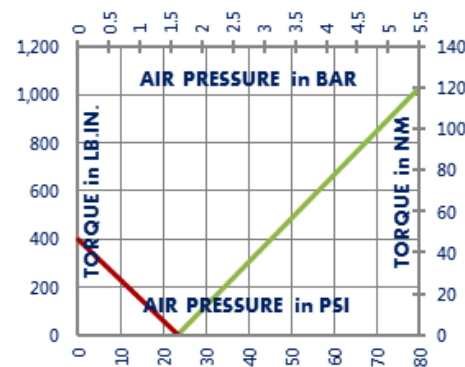
450 Pounds

Shipping Weight

55 Pounds



TORQUE vs. AIR PRESSURE



NEW vs. BURNISHED TORQUE

The torque output of a new friction brake or clutch can be up to 40% less than the published torque rating. To achieve full design torque, a unit must be cycled under load to burnish the friction surfaces. The exact number of cycles varies by application.

When calculating required torque always use a safety factor of 1.5 to 2. It is not recommended to select a product for use at its maximum rated torque for continuous duty.

PRODUCT SELECTION

Torque capacity is only one factor to consider when making a product selection. Ensure that you will have the right product for the job by contacting our engineering department for application review and selection assistance.



101 Cummings Drive
Walton, KY 41094 USA

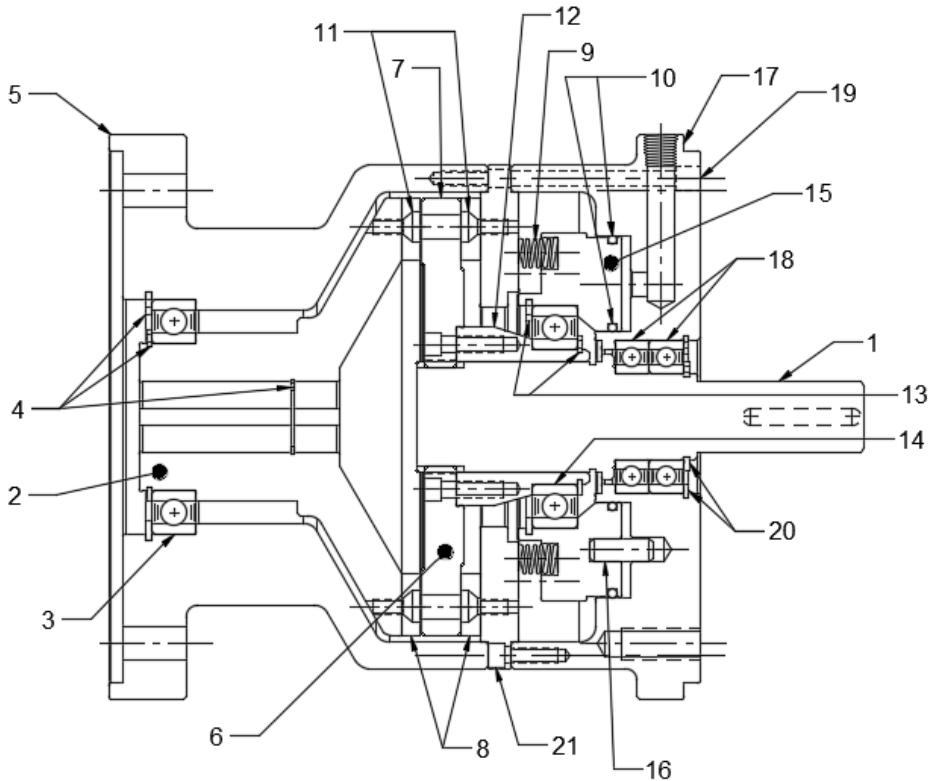
859-291-0849

machiii.com

engineering@machiii.com

X7C2R-18H

Parts Diagram



REF#	DESCRIPTION & PARTS INCLUDED	QUANTITY	KIT NUMBER
DRIVE HUB KIT			
1	Drive Hub	1	X7C2R-18H-HUBK
ADAPTER KIT			
2	Female Hub	1	X7C2R-18H-ADPK
3	Bearing	1	
4	Retainer Ring	3	
5	Adapter Female	1	
DRIVE DISC KIT			
6	Drive Disc	1	X7C2R-18H-DRDK
7	Screw	6	
REPAIR KIT			
8	Friction Disc	2	X7C2R-18H-RPRK
9	Spring	34	
10	O-Ring	2	
11	Screw	12	
PISTON KIT			
12	Cone	1	X7C2R-18H-PSTK
13	Retainer Ring	2	
14	Bearing	1	
15	Piston	1	
16	Pin	2	
CYLINDER KIT			
17	Adapter Male	1	X7C2R-18H-CYLK
18	Bearing	2	
19	Screw	12	
20	Retainer Ring	2	
21	Brake Adapter	1	

PARTS KITS

The *Repair Kit* contains common wear items for this product. Users are encouraged to stock one or more repair kits considering the number of units installed and the potential downtime if machinery on which the unit is installed is critical equipment. To obtain current pricing and lead time for parts kits, contact customer service.

orders@machiii.com

ADDITIONAL PRODUCT INFORMATION

For illustrated guides showing how Mach III products work, selection guidelines, product manuals, and installation and use recommendations:

<https://machiii.com/resources/how-our-products-work>

For information about how to order, return policy and warranty information:

<https://machiii.com/resources/how-to-order>



859-291-0849

machiii.com

engineering@machiii.com