

EAD4K-STH

Spring Engaged Friction Clutch
End of Shaft Bored, Pilot Mount



Minimum Sprocket Sizes

Chain Size	60	80	100	120
Minimum Teeth	38	29	24	21

Engagement/Disengagement

Spring/Air

Facing Type

High Coefficient

Torque @ 0 PSI – Dynamic

19,231 Pound Inches

Minimum Disengagement Pressure

78 PSI

Maximum Operating Pressure

90 PSI

Maximum RPM

1,100

Bore Range with Standard Keyway

2.125 (54) to 2.750 (72) Inches (mm)

Air Volume/Cycle

18.19 Cubic Inches

Finish

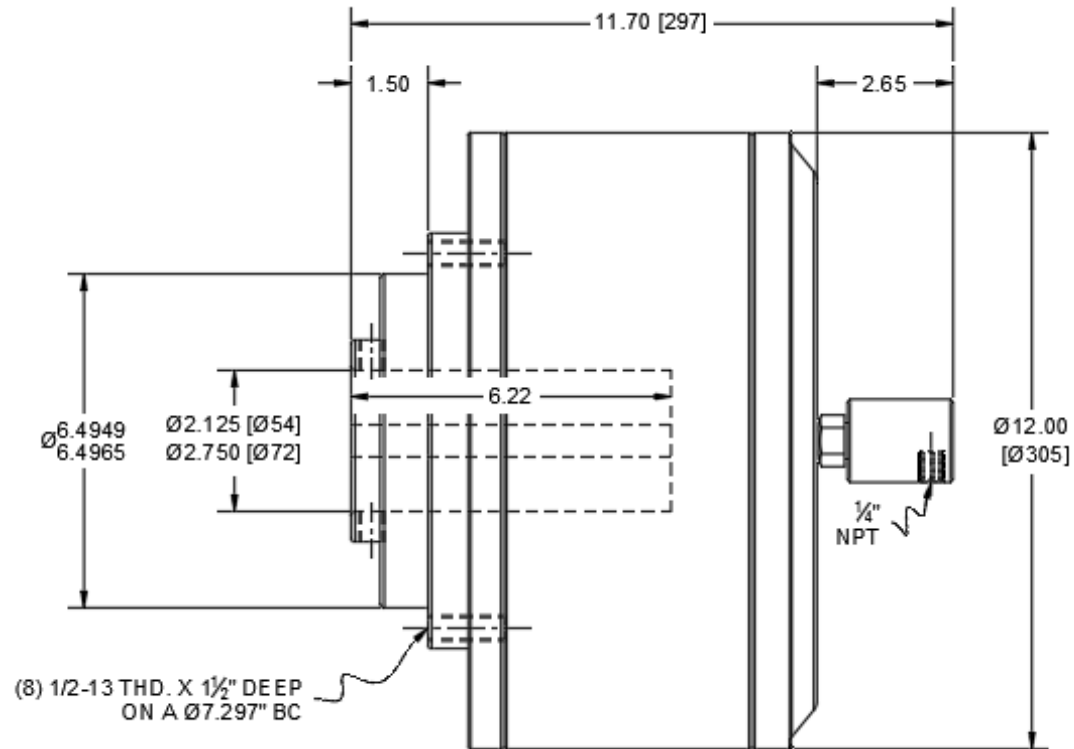
Aluminum

Open or Enclosed Construction

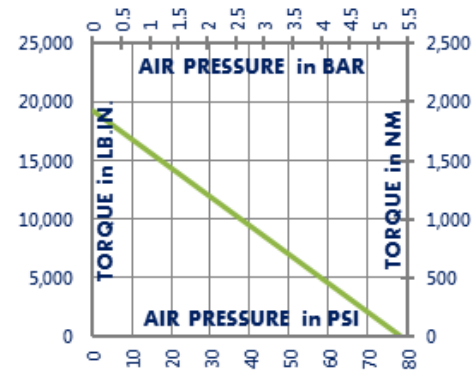
Enclosed

Shipping Weight

89 Pounds



TORQUE vs. AIR PRESSURE



NEW vs. BURNISHED TORQUE

The torque output of a new friction brake or clutch can be up to 40% less than the published torque rating. To achieve full design torque, a unit must be cycled under load to burnish the friction surfaces. The exact number of cycles varies by application.

When calculating required torque always use a safety factor of 1.5 to 2. It is not recommended to select a product for use at its maximum rated torque for continuous duty.

PRODUCT SELECTION

Torque capacity is only one factor to consider when making a product selection. Ensure that you will have the right product for the job by contacting our engineering department for application review and selection assistance.



1580 Lake Street
Elmira, NY 14901 USA

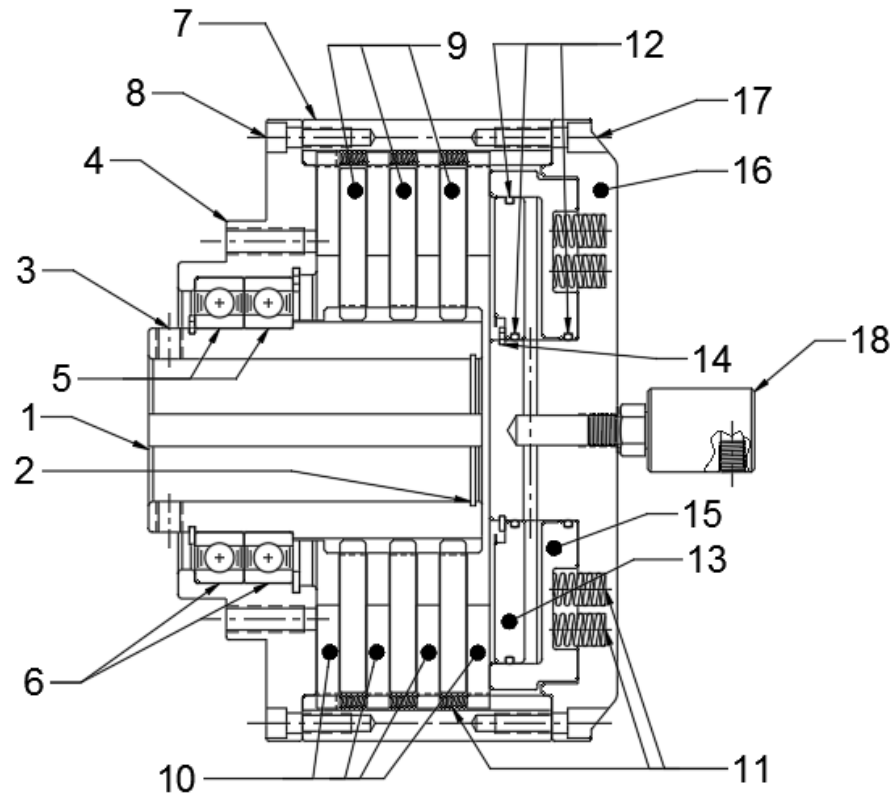
859-291-0849

machiii.com

engineering@machiii.com

EAD4K-STH

Parts Diagram



REF#	DESCRIPTION & PARTS INCLUDED	QUANTITY	KIT NUMBER
DRIVE HUB KIT			E4D4K-STH-HUBK
1	Drive Hub	1	<i>Specify Bore Size When Ordering</i>
2	Retainer Ring	1	
3	Set Screw	2	
SLEEVE KIT			CAA2K-STH-SLVK
4	Sleeve	1	
5	Bearing	2	
6	Retainer Ring	2	
7	Ring Gear	1	
8	Screw	9	
DRIVE DISC KIT			EAD4K-STH-DRDK
9	Drive Disc	3	
REPAIR KIT			EAD4K-STH-RPRK
10	Friction Disc	4	
11	Coil Spring	56	
12	O-Ring	3	
PISTON KIT			EAD4K-STH-PSTK
13	Piston	1	
14	Retainer Ring	1	
15	Spring Retainer	1	
CYLINDER KIT			EAD4K-STH-CYLK
16	Cylinder	1	
17	Screw	9	
18	ROTATING SEAL	1	RSEAL-029

PARTS KITS

The *Repair Kit* contains common wear items for this product. Users are encouraged to stock one or more repair kits considering the number of units installed and the potential downtime if machinery on which the unit is installed is critical equipment. To obtain current pricing and lead time for parts kits, contact customer service.

orders@machiil.com

ADDITIONAL PRODUCT INFORMATION

For illustrated guides showing how Mach III products work, selection guidelines, product manuals, and installation and use recommendations:

<https://machiil.com/resources/how-our-products-work>

For information about how to order, return policy and warranty information:

<https://machiil.com/resources/how-to-order>



859-291-0849

machiil.com

engineering@machiil.com