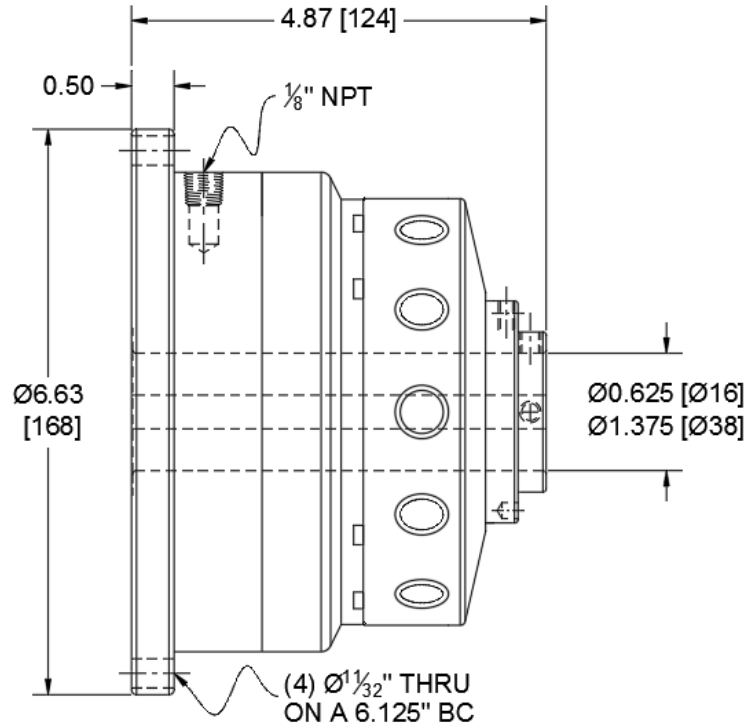


58BK

Tension Control Brake

SensiFlex® Flange Mount



Engagement/Disengagement

Air/Spring

Facing Type

Low Coefficient

Torque @ 80 PSI – Dynamic

409 Pound Inches

Minimum Engagement Pressure

5.5 - 6.5 PSI

Maximum Operating Pressure

80 PSI

Maximum RPM

1,750

Bore Range with Standard Keyway

0.625 (16) to 1.375 (38) Inches (mm)

Air Volume New

0.39 Cubic Inches

Air Volume Worn

2.62 Cubic Inches

Finish

Iron

Open or Enclosed Construction

Open

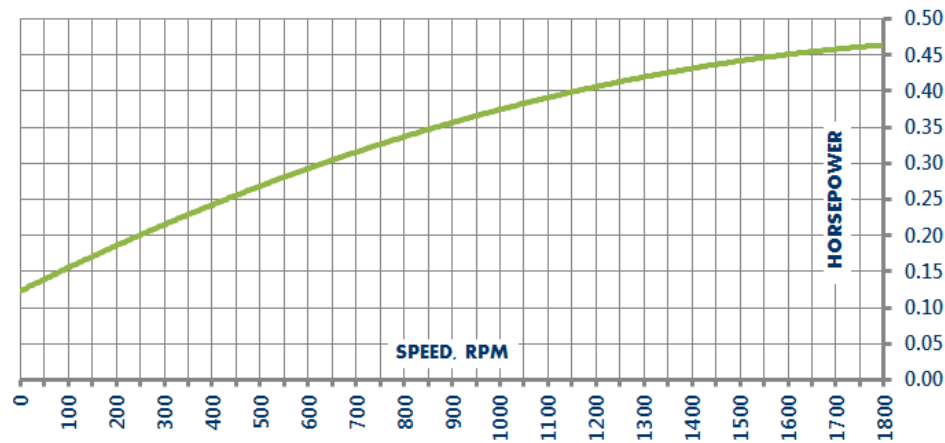
Mounting Bolt Circle

6.125 Inches

Shipping Weight

20 Pounds

CONTINUOUS THERMAL HORSEPOWER

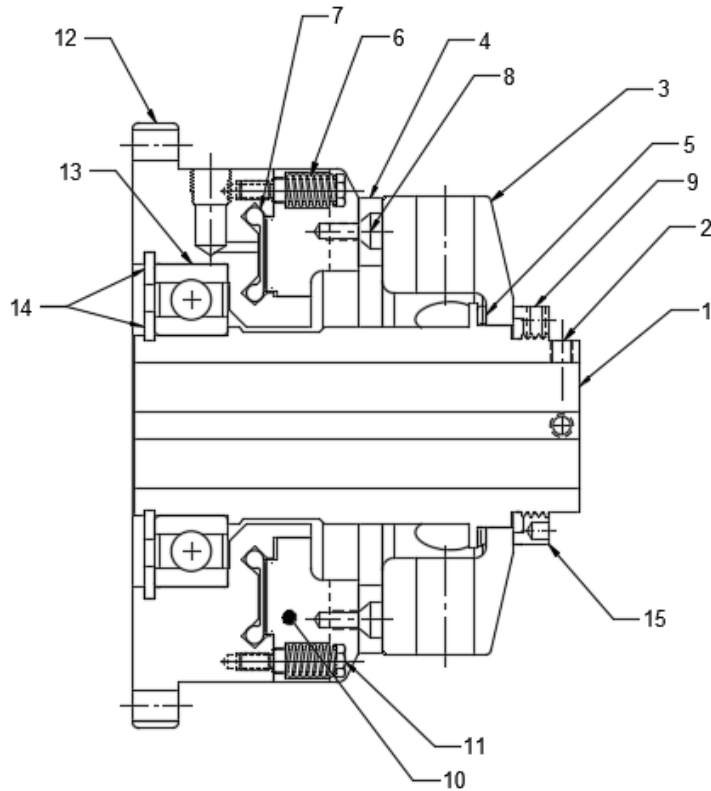


1580 Lake Street
 Elmira, NY 14901 USA
 859-291-0849
 machiii.com

engineering@machiii.com

58BK

Parts Diagram



REF#	DESCRIPTION & PARTS INCLUDED	QUANTITY	KIT NUMBER
DRIVE HUB KIT			
1	Drive Hub	1	58BK-HUBK
2	Set Screw	2	<i>Specify Bore Size When Ordering</i>
DRIVE DISC KIT			
3	Drive Disc	1	58BK-DRDK
FACING KIT			
4	Friction Disc	1	58BK-LOCO-FCGK
8	Screw	6	
9	Nylon Point Set Screw	1	
REPAIR KIT			
4	Friction Disc	1	58BK-LOCO-RPRK
5	Wave Spring	1	
6	Coil Spring	6	
7	Diaphragm	1	
8	Screw	6	
9	Nylon Point Set Screw	1	
11	Stud	6	
PISTON KIT			
10	Piston	1	58BK-PSTK
11	Stud	6	
CYLINDER KIT			
12	Cylinder	1	58BK-CYLK
13	Bearing	1	
14	Retainer Ring	2	
NUT KIT			
15	Nut	1	580B-NUTK
9	Nylon Point Set Screw	1	

PARTS KITS

The *Repair Kit* contains common wear items for this product. Users are encouraged to stock one or more repair kits considering the number of units installed and the potential downtime if machinery on which the unit is installed is critical equipment. To obtain current pricing and lead time for parts kits, contact customer service.

orders@machiii.com

ADDITIONAL PRODUCT INFORMATION

For illustrated guides showing how Mach III products work, selection guidelines, product manuals, and installation and use recommendations:

<https://machiii.com/resources/how-our-products-work>

For information about how to order, return policy and warranty information:

<https://machiii.com/resources/how-to-order>



859-291-0849

machiii.com

engineering@machiii.com