



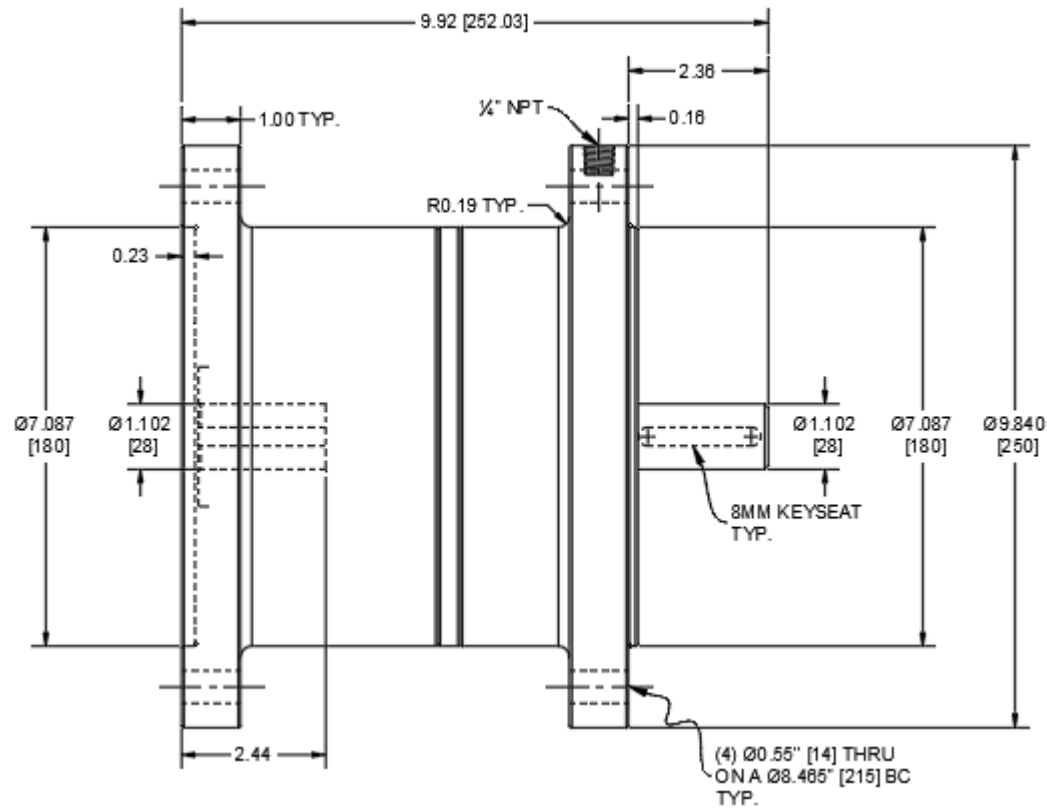
X5C2R-004

IEC Frame Clutch-Brake

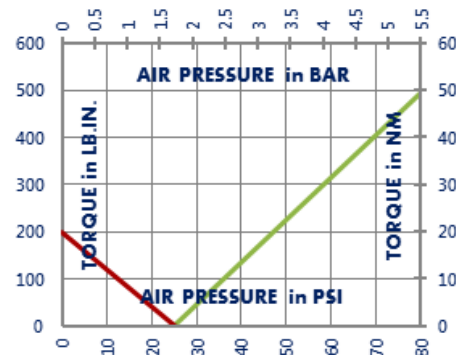
Frame 112 B5 Flange

Suitable for pulley output

Clutch Engagement/Brake Engagement	Air/Spring
Facing Type	High Coefficient
Clutch Torque @ 80 PSI (max) – Dynamic	495 Pound Inches
Brake Torque @ Spring Pressure (fixed)	197 Pound Inches
Brake Release Pressure	20 - 30 PSI
Maximum RPM	1,750
Input Bore/Output Shaft	28mm [1.102 Inches]
Air Volume New	2.03 Cubic Inches
Air Volume Worn	2.86 Cubic Inches
Finish	Aluminum
Open or Enclosed Construction	Enclosed
Overhung Load Capacity	93 Pounds
Shipping Weight	45 Pounds



TORQUE vs. AIR PRESSURE



NEW vs. BURNISHED TORQUE

New clutch or brake torque is approximately 40% less than rated design torque until the friction and drive discs are worn in (lapped, burnished). The length of time for wear-in to occur varies by application.

When calculating required torque always use a service factor of 1.5 to 2. It is not recommended to select a product for use at its maximum rated torque for continuous duty.

PRODUCT SELECTION

Torque capacity is only one factor to consider when making a product selection. Insure that you will have right product for the job by contacting our engineering department for application review and selection assistance.



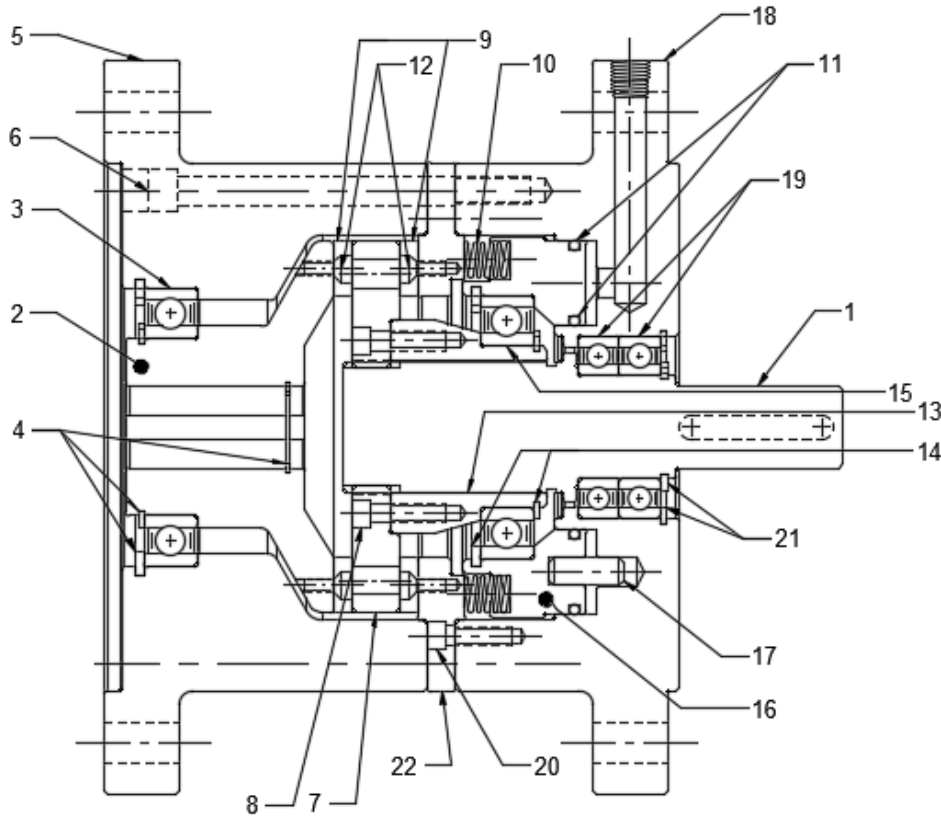
859-291-0849

engineering@machiii.com

www.machiii.com

X5C2R-004

Parts Diagram



REF#	DESCRIPTION & PARTS INCLUDED	QUANTITY	KIT NUMBER
1	DRIVE HUB KIT		X5C2R-004-HUBK
	Drive Hub	1	
2	ADAPTER KIT		X5C2R-004-ADPK
	Female Hub	1	
	Bearing	1	
	Retainer Ring	3	
	Adapter Female	1	
	Screw	6	
7	DRIVE DISC KIT		X5C2R-56H-DRDK
	Drive Disc	1	
8	Screw	6	
9	REPAIR KIT		X5C2R-004-RPRK
	Friction Disc	2	
	Spring	24	
	O-Ring	2	
	Screw	12	
13	PISTON KIT		X5C2R-56H-PSTK
	Cone	1	
	Retainer Ring	2	
	Bearing	1	
	Piston	1	
	Pin	2	
18	CYLINDER KIT		X5C2R-004-CYLK
	Adapter Male	1	
	Bearing	2	
	Screw	6	
	Retainer Ring	2	
	Brake Adapter	1	

PARTS KITS

The *Repair Kit* contains common wear items for this product. Users are encouraged to stock one or more repair kits considering the number of units installed and the potential downtime if machinery on which the unit is installed is critical equipment. To obtain current pricing and lead time for parts kits, contact customer service.

orders@machiii.com

ADDITIONAL PRODUCT INFORMATION

Click on the links below or copy and paste into your web browser.

To view the Installation & Maintenance Manual for this product:
http://www.machiii.com/PDF/Product-Manuals/CLUTCHBR_NEMA_MANUAL.pdf

For information about the application and use of this and other Mach III products:
<http://machiii.com/Application/Default.asp>



859-291-0849

engineering@machiii.com

www.machiii.com